



CHASE APARTMENTS
LONDON



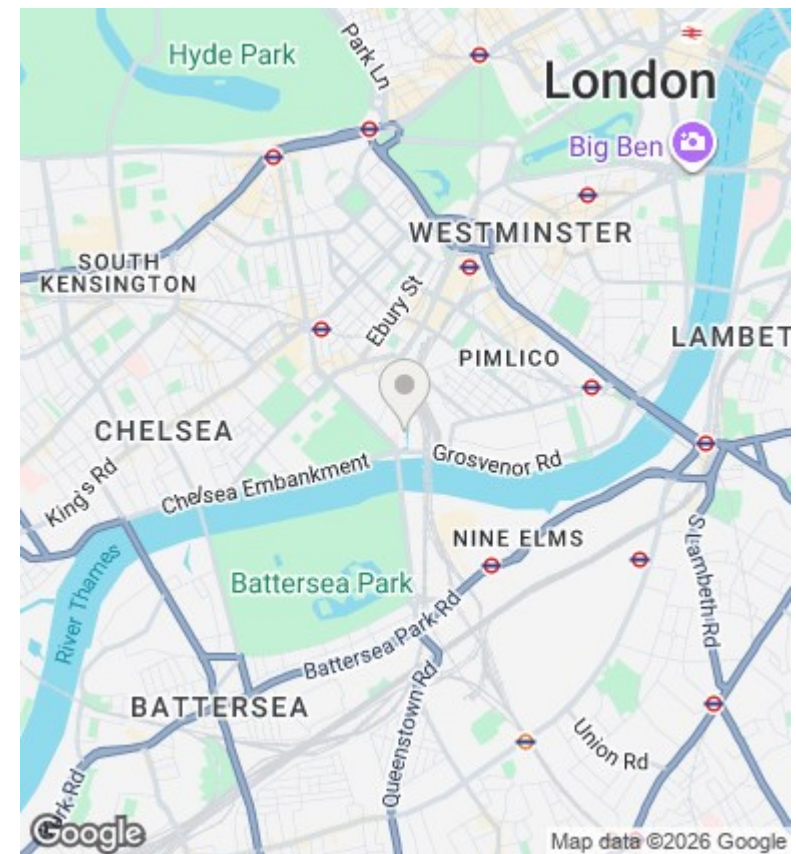
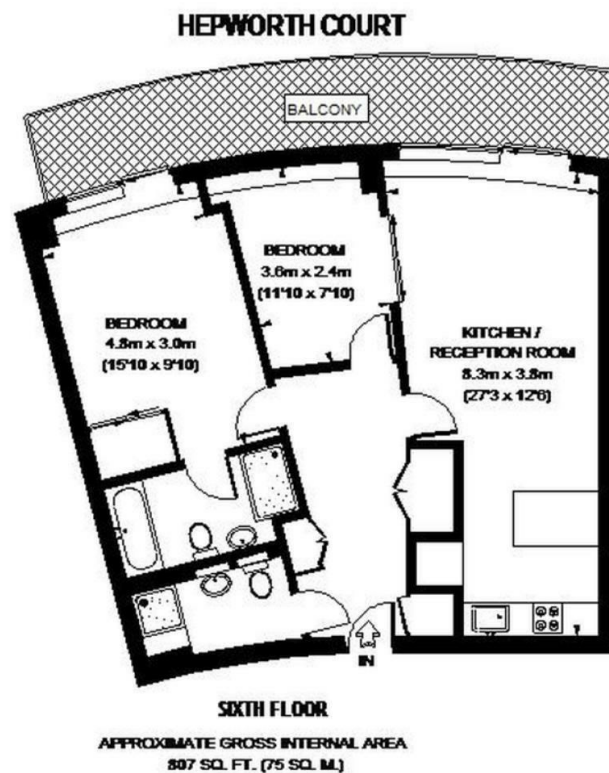
Hepworth Court, Grosvenor Waterside, London, SW1W 8QN

£3,750 PCM

- Prime Chelsea location
- Gym and local supermarket
- Designer stores nearby
- Available now!
- Spacious two-bedroom apartment
- Optional secure parking
- City transport links
- 24/7 concierge service
- Cultural district access
- Secure and private development

Grosvenor Waterside, 32 Gatliff Road, Belgravia, London, SW1W 8QN
02077225022

<http://www.chaseapartments.com/>



Viewings

Viewings by arrangement only.
Call 02077225022 to make an appointment.

Council Tax Band

F

EPC Rating:

C

Energy Efficiency Rating		
	Current	Potential
Very energy efficient - lower running costs		
(92-plus) A		
(81-91) B		
(69-80) C	80	81
(55-68) D		
(39-54) E		
(21-38) F		
(1-20) G		
Not energy efficient - higher running costs		
England & Wales		EU Directive 2002/91/EC